

# The Wonders of the Peak, Buxton Museum: A Family Visit Introduction

## Rationale:

This is a document to be used prior to a visit to prepare families and especially children with additional needs for a visit to Buxton Museum.

This will be helpful to prepare children for the sensory experiences that they will encounter at the Museum and to give photo cues so that children know the setting and important points within the museum (e.g., access routes, important places like toilets).

## Buxton Museum: A Family Visit Introduction



This is the ramp and entrance for Buxton Museum. There are also three steps with yellow edges. Your adults will walk with you into the museum through the green entrance doors.



If your family group needs the door to open automatically, an adult in your group might press the 'push' button to the left of the door. There is another set of doors after the green doors – these are white.

If your group needs these doors to open automatically, an adult in your group might press the 'push' button underneath the bear picture.

The bear picture reminds all the visitors about the things you are not allowed to do in the museum.



This is the foyer or entrance room.

There is a tree which is decorated in different ways during the year. There is a bear sign showing the way in and this table might have a trail for visitors. There is an art cart which might have some creative activities. There is a reception desk.

There is a team of people that work on the reception to meet people visiting the museum – one of the staff will talk to an adult in your family group to welcome you to the museum.

The staff at Buxton Museum will help your family group.



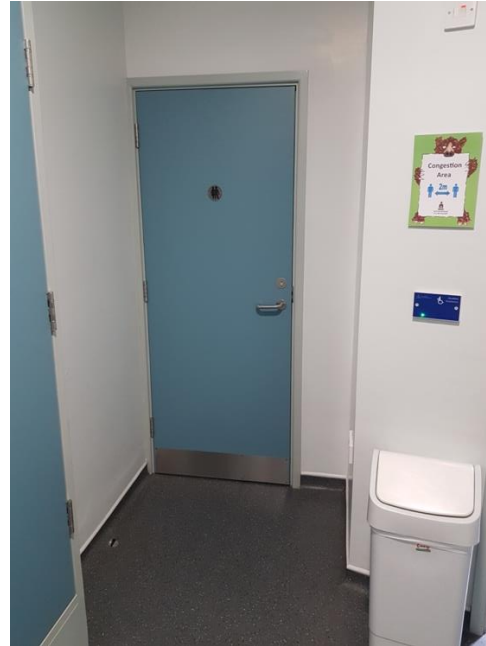
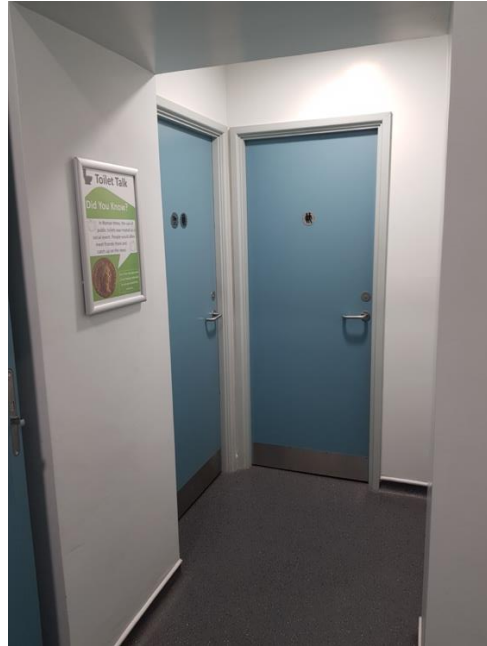
If you are visiting the 'Wonders of the Peak' exhibition, you will need to go upstairs using the stairs or the lift. The stairs are next to the cloakroom area. The lift is back through the entrance room.



The lift is for one person at a time or one child with their caregiver, parent or other adult.

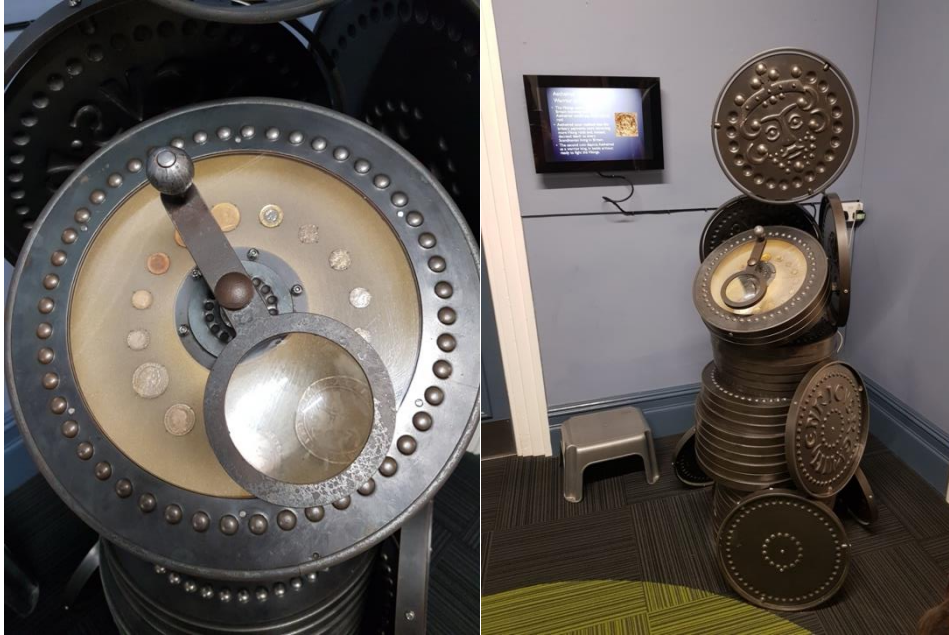


If you are using the stairs, you will walk past the donation box at the top of the stairs. This is a transparent box with coins in.



At the top of the stairs, there are toilets on the right-hand side. In the doorway it says 'Toilets and Baby Changing'. There are 4 toilets. One of the toilets has more space and is accessible for wheelchair users.





Opposite the entrance to the toilets, there is a coin viewer which magnifies coins so that you can look at them closely. It has coins that we use now as well as older coins that you can look at.



Next to the toilets entrance, there is the entrance to 'The Wonders of the Peak' gallery. This is where there are lots of information and objects that tell us about the Peak District's past. Some objects are thousands of years old.

There are 1200 objects so you won't be able to look at everything in one visit. You might look at parts of the collection that interest you or you might follow a trail.

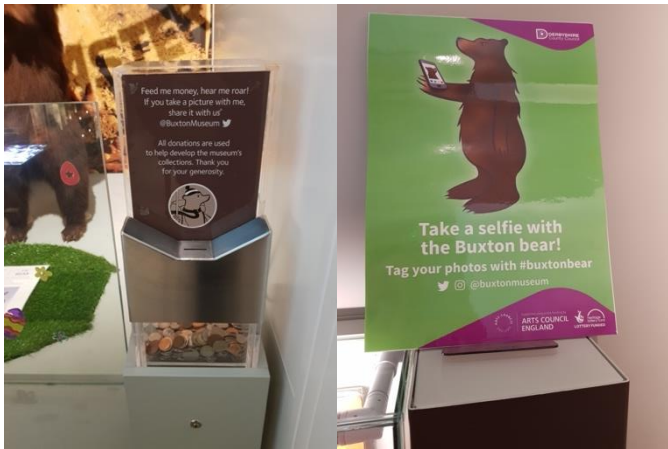


Down the corridor from the entrance way, you will find where the lift arrives on this floor. The lift is for one person at a time or one child with their caregiver, parent or other adult.

Next to the lift, there is a life-sized bear. Sometimes the bear is decorated at different celebrations and different times of year.



The bear makes a soft growling noise if anyone puts a coin into the donations box. Some people like to hear the bear and other people don't. You can decide with your adults whether you are going to donate and hear the bear's growl.



Some people like to take a photo with the Buxton bear! You might want to talk to your adult about whether you would like to do this or not.



On the floor, there is a timeline.

The objects nearer to the bear are newer and the ones further away are very very old. To look from oldest to newer objects start at the far end away from the Buxton bear and walk back towards the bear.

Or if you are looking for a particular age like the Romans or the Stone Age, you might ask your adult to help you find where to start.



These are some examples of the collections you can see in the museum.  
There are objects in glass cases to look at but there are also lots of things that you can touch.

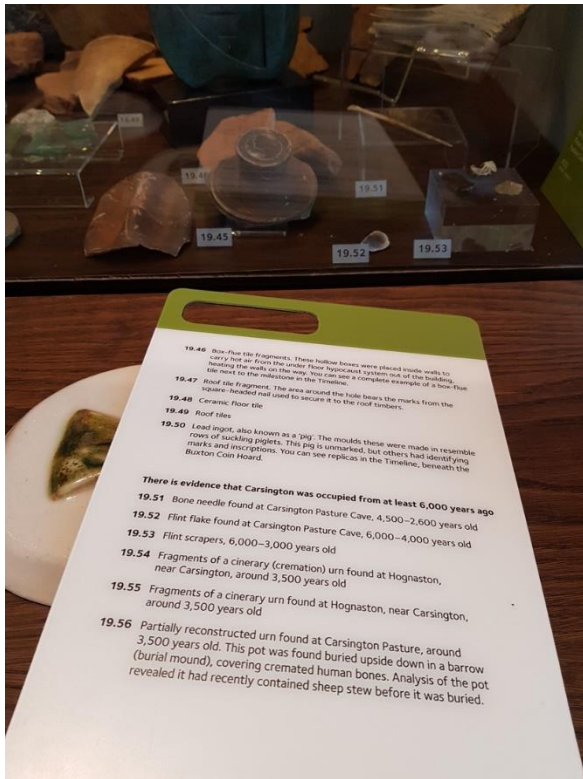


There are screens you can watch or touch, and drawers that you can pull, to look at more objects. There is even a microscope to look at some tiny objects.





In the other part of The Wonders of The Peak, there are objects linked to caves, valleys, hills and pastures.



The objects in all the display cases are numbered. If you look for the number on the boards next to each case, it gives you some information about the objects. You can look these numbers up on The Wonders of the Peak website too ([www.wondersofthepeak.org](http://www.wondersofthepeak.org)).



This is the way to leave The Wonders of The Peak. You might use the lift or the stairs to leave.

If your group has time, you might look at paintings in the Art Gallery.

Or you might visit the Boyd Dawkins Study. This study looks like it would have done in Edwardian times, which were over 100 years ago. You can only walk into part of the study. You may notice a desk, book shelves and objects including animal skulls.



When you are at the bottom of the stairs, you will find the gift shop. (You might have noticed this when you arrived.)  
When you are ready, you will leave through the white doors and the outer doors (which are green on the outside).

Then your family group will be back on the pavement and will have finished your visit to Buxton Museum.