



Community Alarms and Telecare in Derbyshire

Using technology and sensors to help you stay safe



Community Alarms and Telecare

We have items that you can use to help keep you safe at home.

The two main services we offer are:

- Community alarms
- Telecare

Community Alarms



A community alarm has a pendant to wear around your neck, or a wrist band. These have buttons on them.

If you are feeling ill, or need help, you can press the button and someone will help you.



Someone will speak to you through a speaker on the phone base. They will be able to call your carer, your family or the emergency services.

Telecare

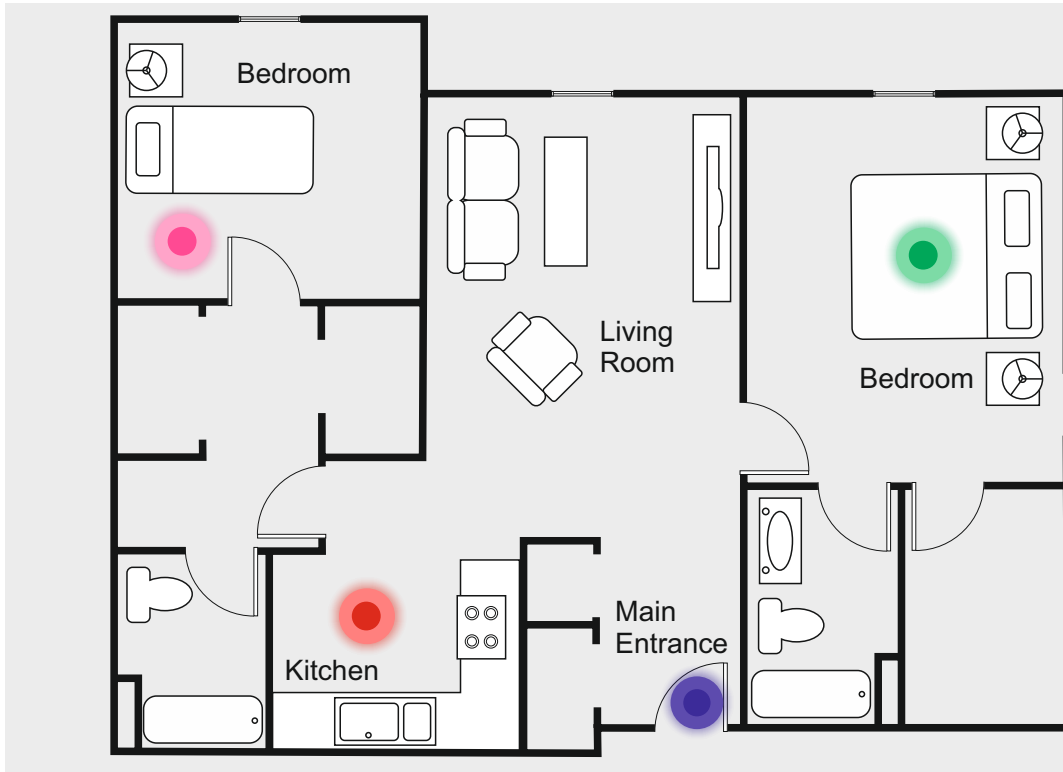
Telecare uses sensors which can tell if there is anything in your home that could be wrong, and needs someone to look at.

Have a look at the picture on the next page for an idea of the sort of sensors that you can get.



If you have a worker, you can speak to them about getting telecare.

- Sensors that can turn on a light when you get out of bed
- Sensors to tell someone you have fallen out of bed
- Sensors to let you know if you have left a tap running or the cooker on
- Sensors to let someone know if you have left the house without anyone knowing



How do community alarms and telecare work?

You will press the button or the sensor will notice a problem



Your alarm will alert someone who will talk to you through a speakerphone.



They will get the right help for you. They could contact your family, carer, neighbour or the emergency services.



For telecare and community alarms to work in your house, you will need a land line telephone.



Some systems can contact your family or carers so they can get the help you need. But most systems connect to a call centre and you will get help from a trained person.

How to get telecare and community alarm services



Any adult can get telecare and community alarms. Some people may have it in their support plan or you can buy telecare with your own money.

You can talk with your Adult Social Care worker about this.



If you don't have a support plan but think you need one you can ring Call Derbyshire on 01629 533190.



For more info about buying community alarms and telecare you can ring Medequip Connect on 01706 572460.

If you don't know which number to ring you can Call Derbyshire on 01639 533190 to find out more.

The Adult Care Information Promise – a **FACT** you can rely on.
We promise to provide you with:



Free information
Accurate information
Clear information
Trustworthy information

If you think we have broken our **FACT** promise, please let us know so we can make improvements.

Call Derbyshire 01629 533190