

Woodland examples we can support



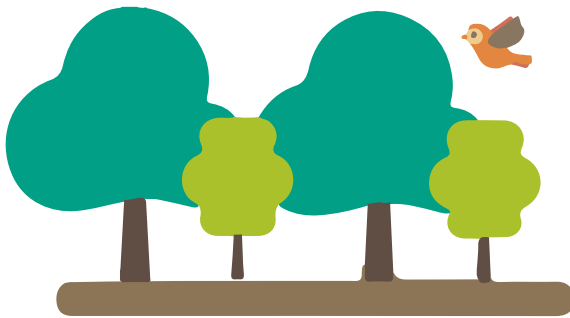
Multi-use woodland (>5 ha)

Minimum of 1,600 tree per ha
No single species more than 70%
Up to 20% woody shrubs



Low density tree planting

Minimum of 25 trees per ha
Minimum final canopy cover of 20%
across area planted
Species appropriate to context



Small scale tree planting (0.5-4.99 ha)

Minimum of 1,100 trees per ha
Up to 20% woody shrubs



Hedgerows with/without trees

5 plants per linear metre
Trees planted every 15 metres as appropriate
70% native or locally characteristic



Very small scale tree planting (0.1-0.49 ha)

Minimum of 1,100 trees per ha
Up to 20% woody shrubs
Fruit trees accepted



Natural colonisation

Must achieve minimum of 60% woody cover
and 100 trees perha within ten years